

Stitches: 4817
 Colors: 4
 Color changes: 4
 Stops: 5

Machine: Tajima
 Trims: 8

Left: 28.1 mm
 Right: 46.4 mm
 Up: 9.8 mm
 Down: 54.4 mm

EndX: 0.36 in
 EndY: -0.54 in

Max Stitch: 11.1 mm
 Min Stitch: 0.1 mm
 Max Jump: 0.5 mm

Color Sequence:

#	St.	Descr.	Code
1.	1217	Dk. Navy Purple	508
2.	1413	Dark Leaf Green	313
3.	821	Fushia	207
4.	1200	Lt. Purple	503
5.	164	Dk. Navy Purple	508

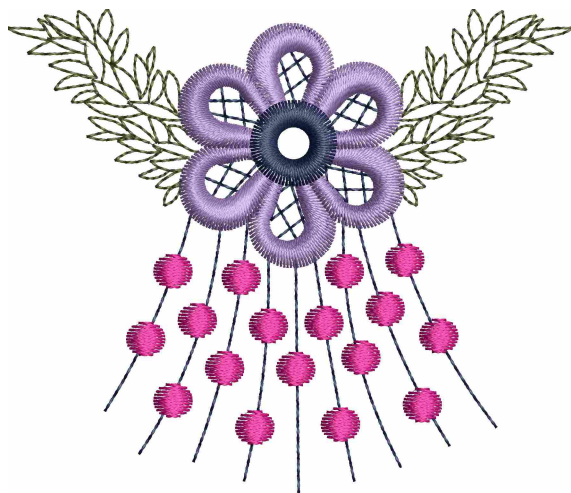
2. Dk. Navy Purple 21.45ft


5. Dark Leaf Green 15.82ft

4. Fushia 14.04ft

1. Lt. Purple 22.89ft

Total Bobbin: 25.25ft



	Filename :	FBFC589.EMB	Stitches:	4817	Max Stitch:	11.1 mm	Design Ref :
	Date:	15 May, 2007	Colors:	4	Min Stitch:	0.1 mm	Date:
	Printed:	15 May, 2007	Color changes:	4	Max Jump:	0.5 mm	Customer :
	H:	2.52 in	Stops:	5	Total Bobbin:	25.25ft	Required By :
	W:	2.94 in	Left:	28.1 mm			
			Right:	46.4 mm			
			Up:	9.8 mm			
			Down:	54.4 mm			
			EndX:	0.36 in			
			EndY:	-0.54 in			

Colorway		Colorway 1
Fabric Color		
Stop	Stitches	
1	1217	508 Dk. Navy Purple
2	1413	313 Dark Leaf Green
3	821	207 Fushia
4	1200	503 Lt. Purple
5	164	508 Dk. Navy Purple