




Stitches: 2374  
Colors: 3  
Color changes: 2  
Stops: 3

Machine: Tajima  
Trims: 2

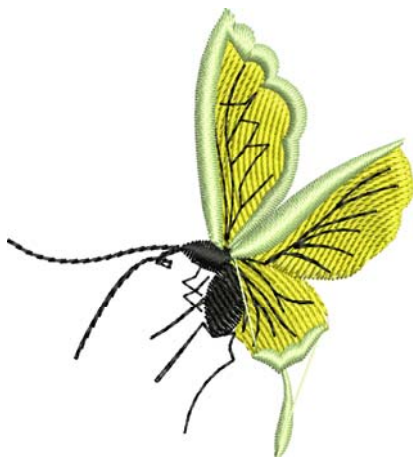
Left: 26.8 mm  
Right: 26.9 mm  
Up: 29.8 mm  
Down: 29.6 mm

Max Stitch: 6.7 mm  
Min Stitch: 0.3 mm  
Max Jump: 6.5 mm

## Color Sequence:

#	St.	Descr.	Code
1.		1048 Yellow	137
2.		525 Black	227
3.		799 Lt Celery	261

4. Yellow 19.95ft  
11. Black 7.99ft  
10. Lt Celery 13.30ft  
Total Bobbin: 15.21ft





Filename : FBFC413.EMB  
Date: 3 Feb, 2006  
Printed: 3 Feb, 2006  
H: 2.34 in  
W: 2.11 in

Stitches: 2374  
Colors: 3  
Color changes: 2  
Stops: 3  
Left: 26.8 mm  
Right: 26.9 mm  
Up: 29.8 mm  
Down: 29.6 mm

Max Stitch: 6.7 mm  
Min Stitch: 0.3 mm  
Max Jump: 6.5 mm  
Total Bobbin: 15.21ft

Design Ref :  
Date:  
Customer :  
Required By :

Colorway		Colorway 1
Fabric Color		
Stop	Stitches	
1	1048	137 Yellow
2	525	227 Black
3	799	261 Lt Celery