



## May, 2009 HOME DECOR CONTEST

These are the wonderful entries in our recent contest. The entrants have written something about each project to give you even more ideas. If you want to see additional and larger views of the entries, go to the photo section of our group and click on the first folder.

There were 1,078 votes for this contest which I think is fantastic! The top three entries were very close and kept changing position during the voting. Six entries have been fighting for 4<sup>th</sup> and 5<sup>th</sup> place also. Every entry got lots of votes. I think this is the closest contest we've had so far.

Thank you everyone for entering and giving us so much inspiration! Suz

### 1. Janet Evans [evansdale@rogers.com]



I am using this as a window curtain.

I used a cut away stabilizer to help make it a little more stable and to cut down on the light shining through. I used cotton material as the sashing and bindings. Then hung on a curtain rod over my window.

2. -Bridgett Catron [bridgett\_catron@yahoo.com]



Here are pictures of the bowl that I made using the Watercolor Iris designs BFC294 along with the plain bowl from the Victorian Angels designs BFC197. I re-sized the Iris designs down a tiny bit. And the bowl was a success. Thanks for making me look like I know what I am doing again.

[www.BFC-Creations.com](http://www.BFC-Creations.com)

[Suz@BFC-Creations.com](mailto:Suz@BFC-Creations.com)

2

©BFC-Creations.com and Susan Makalinaw

3. Marsha Lemmons [hobbied1@bellsouth.net] **FIFTH PLACE**



Here are pics of a recent project...a wallhanging for my granddaughter's dance recital. She's 3 & loves pink & purple. When Fred released the Roses with Ballet slippers, it was perfect for her & at just the right time! I stitched the design on 100% cotton, assembled it with satin stitching. The crazy quilting was done using satin overlaid with glitter organza with machine decorative stitches at the seams. I used a fusible fleece to quilt the crazy quilting & added a layer of low loft batting when I assembled the wallhanging to make it nice & puffy for her, then outline quilted the sections. Forgot to mention....I added little loop tabs before adding the outer border & threaded white tulle through them & tied in a bow at the bottom. I made a little bouquet (3 rosebuds) of yellow roses from your FSL rose design & tied it up with more tulle &

[www.BFC-Creations.com](http://www.BFC-Creations.com)

[Suz@BFC-Creations.com](mailto:Suz@BFC-Creations.com)

3

©BFC-Creations.com and Susan Makalinaw

pastel curling ribbons. She received the bouquet at the recital & it was designed to tuck into the large bow on the wallhanging for display. Thought I had taken a picture of it this way, but can't locate it. She absolutely loved it!! Hope you like it, too.

#### 4. Paula Blair [sewing@charter.net]



I used the native designs on my pillows. I used tear a way stablizer on bottom and a cover up on top since this fabric has a pretty thick nap to it. This was an out of the box experience for me. I usually put designs on clothes and the material was very slick. The designs stitched out very nice, I just had fun trying to sew the pieces together.



I've purchased several of the window designs, but this is the first that I've actually finished! (but definitely NOT the last - working on grand canyon now for my dad).

It is BFC569 Orchid & Hummingbird. I made it for my mother's birthday (she loves hummers). I used unbleached muslin and a medium tearaway stabilizer. Admelody and Robison Anton threads. After I assembled the windows, I added the batik border. Then ironed a piece of fusible fleece for a batting Backing & binding are a black marbled fabric. After it was layered, I stitched on black bias strips to form the window frame.

Love how it turned out!



BFC666 – Windows of the World - Egypt.

This was a very large window and I made two embroideries out of it. I made one wall hanging with the Pyramid and the camels and made this table runner with the Egyptians on the Nile.

I stitched the designs on to a white quilting fabric (We call it Homespun here and I think it is better quality than what you call homespun in the US.) I used two layers of tearaway stabilizer. I hooped the fabric and the stabilizer. It embroidered extremely well as do all of BFC designs. I had the very nice Egyptian fabric in my stash. I mitred it around the design to give the illusions of various frames. I machine quilted it.

I have attached a picture of the table runner - and up close of the embroidery and the quilting on the back

<a href="http://www.BFC-Creations.com">www.BFC-Creations.com</a>		<a href="mailto:Suz@BFC-Creations.com">Suz@BFC-Creations.com</a>
		6
©BFC-Creations.com and Susan Makalinaw		

7. GERALDINE AGACINSKI



The stained glass peacock--BFC461. I used the small size. This was the 1st of Suz's designs that I have done. I only used 9 of the parts to make the pillow. Hope you like it.

[www.BFC-Creations.com](http://www.BFC-Creations.com)

[Suz@BFC-Creations.com](mailto:Suz@BFC-Creations.com)

7

©BFC-Creations.com and Susan Makalinaw

8. Pat Pelosi



I had picked this picture(BFC810M) because it reminded me of the area we live in. You can almost feel the coolness from the colors.I used Kona cotton and ironed on sulky totally stable and then used a med. tear away also. It was my first window and really enjoyed it. I have since done a couple more for gifts.

[www.BFC-Creations.com](http://www.BFC-Creations.com)

[Suz@BFC-Creations.com](mailto:Suz@BFC-Creations.com)

8

©BFC-Creations.com and Susan Makalinaw



9. Susan Herring



This is hanging in hubby's computer room so I consider it home dec.

I made this for hubby's birthday in Dec. 08. I used cotton for the backing and tear-away stabilizer and of course Admelody rayon threads. I was unable to purchase a frame to fit so I added double wide bias tape (black) to fill the gap between picture edge and frame. I did not add or change anything with the picture. It is bfc778-window-Two Wolves

Hubby loves it!!!!!!

10. Diana LeBherz **FOURTH PLACE**



I stitched this picture on one piece of fabric, lining up the designs and added crystals in the eyes. I have sky lights and depending on the time of day, the eyes sparkle and it is fascinating the way they move with the light. The ceiling fan also makes them sparkle.....

<a href="http://www.BFC-Creations.com">www.BFC-Creations.com</a>		<a href="mailto:Suz@BFC-Creations.com">Suz@BFC-Creations.com</a>
		10
©BFC-Creations.com and Susan Makalinaw		



. I used your Deep Woods to make this wall hanging. I changed the colors to go along with my decor. I used a heavy stabilizer, so it would hold its shape. I wanted to make it look 3 dimensional by using the attic window and then finishing it off with log cabin and fan blocks. It reminds me of our own beautiful woods of Pennsylvania. It has been fun...

12-Grace A Brown



THIS IS THE EAGLE PICTURE I DID FOR MY GRANDSON'S EAGLE CEREMONY.  
WHEN I DID THIS PICTURE I LINED UP THE DESIGNS SECTIONS, RATHER THAN DOING THEM SEPERATELY AND SEWING THEM TOGEATHER.

I THEN HAD THE PICTURE MATTED AND PUT IT IN A FRAME.

I SURPRIZED MYSELF WHEN I ACCOMPLISHED THIS PROJECT.

[www.BFC-Creations.com](http://www.BFC-Creations.com)

[Suz@BFC-Creations.com](mailto:Suz@BFC-Creations.com)

12

©BFC-Creations.com and Susan Makalinaw



I really liked your oriental reflections and used them for my placemats. Most placemats are just not big enough for a place setting, so I made these 24 x 16. They consist of six 8x8 squares. Each square was quilted & embroidered. I made bias binding for the outer edge for a clean finish. I have sent you two photos, one of the front and one of the back. I hope you like the way I used your designs.



My entry is BFC696 Large Roses and Gaillardia. The recommended Admelody threads seemed to make the floral bouquet come alive on the fabric and the batik border enhances the finished wall hanging. For stabilizers I used Floriani's soft cutaway fusible and Jenny Haskins Magic tearaway in the hoop. The batting is thin fusible polyester. Usually I don't do my own quilting but I decided to give it a try this time. This design really stitches out so well although I think if I were to do it again I would add one more layer of fusible cutaway to the fabric before basting the fabric on the tearaway for stitching.

<a href="http://www.BFC-Creations.com">www.BFC-Creations.com</a>		<a href="mailto:Suz@BFC-Creations.com">Suz@BFC-Creations.com</a>
		14
©BFC-Creations.com and Susan Makalinaw		



Hello Suze,

Here is my entry for the home dec contest.

It was sewn on my new Viking Designer Diamond. I was able to sew out several of the components in the majestic hoop (200x360) and sort the colors to reduce the color stops. I used some metallic thread on the wings, but didn't follow the suggested colors too closely. I love vivid colors. I bordered it with acetate satin and quilted it with metallic thread...tho it may not show well in the photo.

It hangs at the foot of the stairs in my sewing room. I designed it to fit in the faux stone window there and used the light color border to highlight it in a dim area. I may get better lighting there now that I have something to show off...lol.

. It is finished with prairie points, braid and beaded fringe at the bottom.

I love this design, Suze. I took a long time choosing it among all your wonderful choices but I am so pleased now with how it looks in this space.

It'sBFC635L.

About stabilizers, I tried several but the best was Pellon iron on cut away. I used only one layer with white muslin. I sewed the design together and then sewed it onto the yellow satin acetate and then added the iron on batting just to the outer outline because I wanted the border to stand up from the design. That was a mistake. 🙄. Cutting out the batting only made it warp a bit. I fixed that with bracing top and bottom with wooden dowells so it hangs flat on the wall now. But next time, I will use batting on the whole piece and stitch in the ditch.

I hope that helps someone else.

Nothing replaces practice and experience...except good advise and someone else's bad experience....lol.





This is done on one layer of WSS, nothing much to say other than it turned out beautiful. The name of the set is BFC280 LACE BOWL AND DOILY –Daylily Garden



Designs used: BFC778L Window - Two Wolves & BFC514M #'s 4 and 6 Wolves by Fred

Stabilizer - Medium Weight Tear-Away

Materials - I used a dark blue Duponi Silk for the window and the first border and a 1/4" wide black satin ribbon around the window. I then used a satin blanket binding, unfolded and pressed for the black and gold borders.

I printed out the window designs on velum paper so that I could sew out the window on one piece of fabric. After sewing one block I would line up the next design with the previous design so that everything lined up. There was a little overlap on each block, but they lined up just about perfect and blended in very nicely on most of the blocks. The last block I had to resize a little because it overlapped too much.

After attaching the borders I embroidered # 4 and #6 from the Wolves by Fred designs in each top corner.

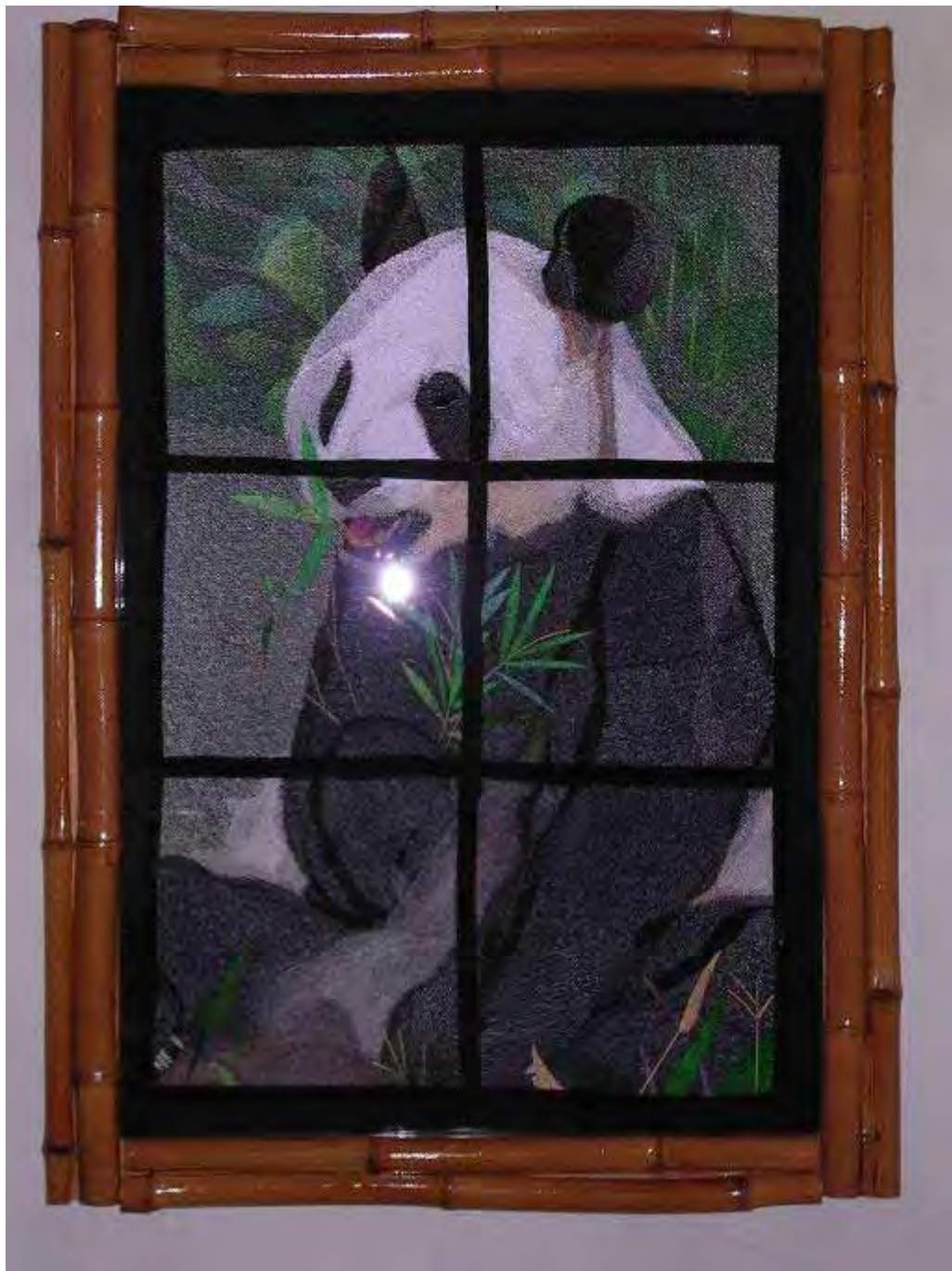
I am still thinking about doing some quilting on the borders but don't know what to use and what kind of quilt design will look good with it. This will be a birthday gift for my brother who loves wolves.

[www.BFC-Creations.com](http://www.BFC-Creations.com)

[Suz@BFC-Creations.com](mailto:Suz@BFC-Creations.com)

18

©BFC-Creations.com and Susan Makalinaw



I have attached a picture of the Giant Panda I stitched for my daughter's 40th birthday. My husband made the frame and too a bamboo fishing pole cut it up and covered the edges of the frame. you may have to turn the picture or let me know and i can fix it if it is not right. Hope you like what I did.



I stitched the 2 orchid wall hangings (BFC569, BFC740) to be used as a group wall hanging. In the BFC740, I changed the colors to coordinate with the first wall hanging. If I were doing it again, I would use a little more contrast in BFC740. The background is a little too muted. I also used bias fabric strips that I made for the leading or window panes.

Supplies:

- Embroidery Designs
- Off white fabric
- Two layers of Clean and Tear
- K505 spray between all layers
- Thread

After embroidery is done

<a href="http://www.BFC-Creations.com">www.BFC-Creations.com</a>		<a href="mailto:Suz@BFC-Creations.com">Suz@BFC-Creations.com</a>
		20
©BFC-Creations.com and Susan Makalinaw		

- Check for missing stitches. Fill in gaps with free motion stitching.
- Pull off tear away
- Press each block with steam, using a pressing cloth
- If needed, stretch as pressing
- Trim seam with ½” seam allowance. One fourth seam is a little too small
- Sew panels together, barely catching threads. Use #1 foot and center mark on foot just misses center line.
- Alternate method: Cut seams to ¼”. Place one seam over the other. Zig Zag the two together.
- Check for missing stitches again. Fill in gaps with free motion stitching after placing stabilizer over areas to be stitched.
- Free motion on any missing stitches over seam lines which helps to anchor seam lines.

#### Leading Fabric (window panes)

- Starch leading fabric
- Cut into ½” strips for ¼” finished strips
- Use bias maker and feed strips through it
- Cut Steam-A-Seam2 that is ¼” wide in half. End up with narrow 1/8” strip
- Finger press Steam-A-Seam2 strips to leading. Lightly iron.
- Position leading over embroidery seams. Iron
- Sew with double needle (4.0). Color match on bobbin thread. On overlapping seams, may have to manually turn the sewing wheel.

#### Borders

- Square embroidery before sewing border.
- Cut 3 ½” strips for border width. Borders will be cut down later.
- Don’t miter borders.
- Mark ¼” on border before sewing
- Sew short sides first, then long sides
- Press seams out toward border.
- Position leading between border and embroidery squares. Press. Then sew leading onto border, using double needle.
- Square border again.

#### Quilting

- Sandwich with batting remnants. Backing is green pine sprigs
- Quilt in ditch between leading. Use ivy pattern in border. A single ivy leaf in corner

#### Bias Binding

- Use Prism black.
- First piece I used 2 ½” strips (too wide). Use 2 ¼”

#### Hand sewing

- Binding
- Hanger is 6” wide strip of fabric. Press end pieces for finished edge. Then sew fabric lengthwise in a tube
- Attach quilt label.

<a href="http://www.BFC-Creations.com">www.BFC-Creations.com</a>		<a href="mailto:Suz@BFC-Creations.com">Suz@BFC-Creations.com</a>
		21
©BFC-Creations.com and Susan Makalinaw		



I modified the following designs in my computer.

- BFC262-06 (amaryllis): I completely changed the colors
- BFC413-03 (hibiscus from Floral Combo 1): I deleted the buds on the top
- BFC484-07: I slightly changed the colors to match my satin bias and fabric
- BFC484-09: I also changed the colors
- BFC595-23 (poppy): I deleted the leaves and stem

When the embroidery was finished (I used a tearaway stabilizer and rayon Madeira thread), I stitched a satin bias (by hand!) to create a frame for the designs. Once the bias was secured on my background fabric, I stitched one of the decorative stitches from my machine along each part of the bias to create a ribbon look.

Then I only had to stitch the border with mitered corners. Finally I stitched the backing to the top (right sides together) leaving an opening to turn the inside out.

[www.BFC-Creations.com](http://www.BFC-Creations.com)

[Suz@BFC-Creations.com](mailto:Suz@BFC-Creations.com)