



May, 2009 HANDBAG AND TOTE CONTEST

These are the wonderful entries in our recent contest. The entrants have written something about each project to give you even more ideas. If you want to see additional and larger views of the entries, go to the photo section of our group and click on the first folder.

Thankyou everyone for entering and giving us so much inspiration! Suz

1. SuZan Widecrantz **FOURTH PLACE**



this was my first attempt at making an embroidered bag~~~the emb. pattern is [Orchid Jungle Handbag--- med size bag](#)~~~ I used a celery green moleskin fabric for the outside & and a vintage silky red fabric for the lining~~~the emb. thread I used is Admelody rayon~~~ love that thread <g>
stabilizer - Sulky Totally Stable- (what I had on hand) my emb. machine is a Janome 300e (user friendly)
I enjoyed making this bag and get so many compliments when I wear it !

2-Pat Houk



Have had so many compliments with it and offers to make some. It is the Aquarian purse, I did both sides (wanted it be seen coming and going) and it is definitely a compliment getter.

3. Sunny Chandonais



I am enclosing three photographs of the Peony handbag. I used fusible fleece as a backing after embroidering the back and front. For stabilizer to embroider I used two layers of poly-mesh. I also interfaced the back and front pockets with fusible interfacing, as well as the strap. I used a lighter weight fusible interfacing for the polyester ("fake" shantung) gold lining. The purse fabric is from drapery fabric at JoAnns. For the bottom of the gusset I used a heavy-duty craft interfacing and fused it on with Wonder-Under. I changed the style of the back pocket by making it the full width of the back and stitching up the middle so it has two slots. I also added a flap over that. This was a fun project and is a gift to my wonderful 85-year old mother-in-law for Mother's Day.

www.BFC-Creations.com

Suz@BFC-Creations.com

2

©BFC-Creations.com and Susan Makalinaw

4. Judy Darden



So excited to be able to share your wonderful designs for all to see. I am submitting my "variation" of your Chinese Handbag. As I wanted a larger tote style bag, I adapted these designs for a tote that was my own pattern. I actually used batting under the designs and really like the look. The layout was slightly different to get the effect I wanted and used this design for the large front pocket. I also used a combination of folding the fabric back on one side but left the other one open flat in order to sew the inside parts together. The pocket has a magnetic snap as does the tote itself. I used a medium weight linen for the main sections with additional padding between the tote and the lining. The lining is a batik cotton. There are 5 sections within the bag, which don't show up too well in the photo. The embroidery thread is poly. The only thing I would do different is add an inside zipper!

5. Jan Bean



This is a little bag made using the bling BFC803-02 design. I loved the bling and used hot fix crystals on the design. Since I was going for a very small bag to just hold the bare minimum I made it very simple - around 14 x 12. There is beautiful beaded fringe with interesting small shells, gyp to add interest and decorative

www.BFC-Creations.com		Suz@BFC-Creations.com
		3
©BFC-Creations.com and Susan Makalinaw		

stitching from my sewing machine. I used a zipper especially made for purses - extra heavy duty. The straps are webbing. The cloth is green cotton - with a corresponding fun design on the inside. I added a small pocket on the inside big enough to hold a cell phone. The seams are turned twice to give added strength.

6. Patricia Carnes



I used regular inter facing on the heavy side, The fabric was a satin & used poly thread in red, wine & green. I lined it in poly -cotton put in zipper with a pocket.

7. Patricia van Tuyl-Ooms **FIRST PLACE**



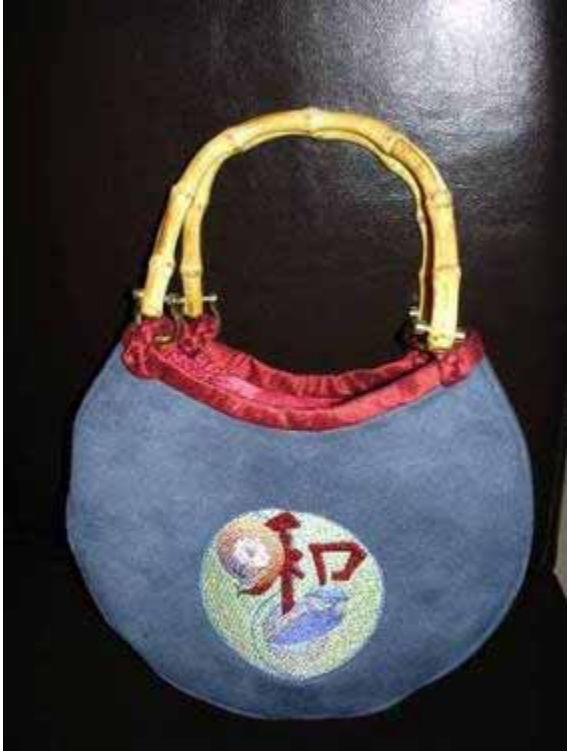
I just finished my saddle bag for an embroider magazine called Stitch@home.

And I read some where you just have a match for bags. So I sent the photo's to you.

www.BFC-Creations.com		Suz@BFC-Creations.com
		4
©BFC-Creations.com and Susan Makalinaw		

I still working on a very nice horse plaid for picknick outside with the Chinese horses. Next Tuesday we make the photo's for the magazine so I will send them also to you.

8. Cynthia Dittman



This bag is my own pattern made for a fund-raising event using one of the many beautiful free designs from BFC. The embroidery design colors were changed to blend with the blue and red fabrics. It was stabilized with a medium-weight cut-away. The fabric is upholstery grade faux suede (polyester). The continuous side/bottom strip is sewn to thin craft foam so that the bag does not collapse with the weight of items placed inside. The binding of the opening is polyester "Dupioni" cut on the bias. The lining is an Asian-themed cotton quilting fabric featuring chrysanthemums. In honor of the Olympic Games held in China, this bag is called Beijing.

www.BFC-Creations.com

Suz@BFC-Creations.com

5

©BFC-Creations.com and Susan Makalinaw

9. Shirley Allen



Suz, I want to thank you again & am sending my last project-Summer Lace Handbag made on Dupioni Burgundy material. It was so much fun to do. Crystals were added, but did not show up well in pic

10. Margaret Lewin



"Made using the Tiger Bag design. Using my Viking Diamond - one hooping with the 200mm x 260mm hoop. Stitched on Silk Noil fabric and lined with silk slipper satin in gold. I added a length of trim by the zipper for a bit of pizzazz. I ironed on fusible no-show mesh to the back and used two layers of tearaway in

www.BFC-Creations.com		Suz@BFC-Creations.com
		6
©BFC-Creations.com and Susan Makalinaw		

the hoop (stuck together with spray adhesive). Used Admelody threads of course! For a batting to firm up the bag I used one layer of Fusible Poly batting on the sides and two in the gusset." Don't hesitate to contact me if you have any questions – Suz Suz@BFC-Creations.com

11-Michelle Blitchok



This is a bag I made using a design from your Art Deco Fantasy set and simply added the word "styling". The bag was made for my daughter's best friend who is a hair stylist. My daughter wanted to give her a tote that she could use to carry her things back and forth to work in. The main body of the bag is a denim fabric. I used an iron on stabilizer under the design and then used a light weight cut away on the hoop itself. The contrasting fabric is a pink and green zebra stripe, resembling a cotton duck type fabric. I used the same fabric to cover the purse strapping which I used for strength, to make it match the purse. My daughter's friend is artsy and fashion progressive and this design fit her to a T. The embellishments were simple, a beaded trim around the top and hot fix "jewels" to make a dimensional earring. My daughter's friend loved it. As I remember the only changes I made were in the choices of thread color, keeping more with the vibrant tones to match the vibrancy of the recipient.

www.BFC-Creations.com

Suz@BFC-Creations.com

7

©BFC-Creations.com and Susan Makalinaw

12-Deborah Gildart-Hanks



13-Crystal Ziemann



This bag was done using your Super Large Geisha design, BFC692. I made the top section on fabric used in the top of bag and the bottom section on organza which was trimmed close to the embroidery, then glued directly onto the gourd bottom and over the fabric fitting into the puzzle place of the top Geisha section. The embroidery was done on my SWF 15 needle machine which allowed for all the colors I used to be loaded to make the stitching easier and quicker. The bottom of bag is two sections of a canteen gourd cut and glued together. Fabric was used for the decoupage on gourd and zipper pockets attached to the fabric section. The bag design had to be changed and adapted to fit the gourd base. I entered other gourd art pieces in the

www.BFC-Creations.com

Suz@BFC-Creations.com

8

©BFC-Creations.com and Susan Makalinaw

Kerrville, TX National Fine Art Gourd Show, but could not enter this one due to the BFC design which was not mine and the large use of fabric. So, I thought I would share it with the BFC stitchers. There are photos of this bag and other gourd art etc. on my website - www.ziemannstudio.com

14-Patsy Moschkau



I used 80-20 batting and iron on interfacing on my bag. The process was fun. I plan to make more in different fabrics.

15-Cathleen Spiller



www.BFC-Creations.com

Suz@BFC-Creations.com

9

©BFC-Creations.com and Susan Makalinaw

The bag I'm entering is my own design (the bag itself that is). I combined two BFC designs for the embroidery on the front of the bag.

The bag itself is made of black Ultra-Suede. I use a cut-away stabilizer I get from AllStitch for the embroidery work.

I used Admelody Rayon thread. The lining is cotton, cats in kimonos. I put pockets around the entire bag (inside) and a cell phone pocket up high toward the side. I made the handles from the ultra-suede, with a core of crinoline. The bottom is an oval shape. I add a layer of TimTex to make the bottom firm. I also self-covered cording around the bottom. A magnet snap is the closure.

Just a little added info if you are interested. I designed this bag because I was so frustrated with trying to find a purse I liked at the store. I make them now for other people, but no two bags are the same (as far as the embroidery work done on them), I will only make one of a kind. I make these bags and I also make tote bags. I usually make both out of twill that I quilt either before or after doing the embroidery work, or, prequilted fabric. I prewash all my fabrics so that the bags can be tossed in the washer.. It seems each one I make "evolves", I'm always thinking of ways to improve on the design. I now use earth magnets inside the base of the handles for closure, people seem to really like it.

16-Anne Goligher



Suz, I made the QIH bag with upholstery material. The batting was curtain interlining which has a finished backing, I have used this for several pictures and bags as it does not required stabilizer. The lining of the outer bag again was furnishing water silk fabric, and furnishing fabric for the inner bag and lining. All the fabric, buttons, zip were taken from my stash. The material was too thick for your strap design so when I

www.BFC-Creations.com		Suz@BFC-Creations.com
		10
©BFC-Creations.com and Susan Makalinaw		

saw the jaguar bag strap I thought it was something that could be adapted for this bag. Although I put buttonholes on the side once again with the upholstery fabric I found that it was difficult to attach to the inner bag, so I sewed two buttons with shanks together and made buttonholes in the inner bag, and found that this worked fine. The tape on the inside of the strap is save the bag from sagging and can be adjusted depending on the contents. I will make another bag tone on tone perhaps using a canvas rather than upholstery material

17- Susan_Davis



18-Betty J Kurzfeld



My Travel Bag has plenty of pockets, 2 inside and a couple of holders for Duty Free bottles and outside on the back a zippered one the width of the bag, the Tokyo has been covered with black tulle to grey it out as I

www.BFC-Creations.com		Suz@BFC-Creations.com
		11
©BFC-Creations.com and Susan Makalinaw		

have not been there yet and the tulle will be removed when I get there. Make sure you use a wadding that will not sneak thru to the outside, double handles for when heavy and the chain for over the shoulder use.

19-Susan McConachie **THIRD PLACE**



I made the orchid bag with black velveteen, with guitermann totally stable stabilizer. The two pockets on the back were made into one pocket which was closed by a zip, a small narrow pocket on one of the sides for pens (requirements from the recipient). Since the recipient was a male, who would be using the bag to carry books and papers, I made a quilted shoulder strap the exact correct length for the recipient of the bag. The shoulder strap had a layer of 3cm wadding and a strip of webbing to prevent the strap from stretching from weight of the books. The strap was **thoroughly** stitched onto the side (backwards and forwards many times, and then finishing with satin stitch to make it look good) before lining the bag with satin. I finished the opening at the top of the bag with a strip of fabric the width of the sides of the bag with a zipper in the centre. All surfaces were lined with a plastic fabric between the velveteen and the lining so that in the rain (which we get plenty of here) the books and papers would remain dry.

20-Betty Morgan



The front is made from black velvet for the embroidered square, the red frame is made of red embroidered satin, and the outside is of black velvet. My stabilizer was two layers of cutaway stabilizer. Then I sprayed the stabilizer before I put the velvet on so the velvet wouldn't slip and it did not.

The back is Dupioni silks. I found a silk blouse at the Salvation Army for just \$4.00 in size xxl and used it here. I even took a chance and washed the blouse in cold water, let it dry a little, ironed it and it was beautiful. The bird on the back is from HIA. so I don't know if it will disqualify me or not.

The tote itself is pretty large because I use it as a purse when I fly to Florida..It holds everything..I've even had some ladies come up and want to buy it straight off my shoulder at the airport (twice now)..a nice complement but ...

no thanks...

21-Toni Melton



www.BFC-Creations.com

Suz@BFC-Creations.com

13

©BFC-Creations.com and Susan Makalinaw

I stitched the Floral Brocade purse on denim. I've done this bag several times - the first time I actually did it as Suz intended, as single pieces that were sewn together. That one was the first BFC handbag that I made. On this one, I combined the separate design elements in my editing software (3D Suite) so that I had just one big design. I stitched it out on my Amaya XT, a 16 needle machine that I have an 11" x 17" hoop for. I used a mid-weight cutaway that I left in to give the front some body. I used some of the brightest threads I had and I love the way the birds pop out on the denim. I added a layer of thin (crib weight) cotton batting and lined it with a bright yellow and used pink for the pockets. It has a couple of pockets inside, a fabric shoulder strap and a magnetic snap closure. I've stitched this design out 3 times now and like the way this one turned out. The first was on quilting cotton with tear away, the second on linen with cut away and this one on denim with cut away. I like the cut away results best. All of the fabrics worked pretty well, but the heavier stabilizer worked better for me, as I left it in to add some stiffness to the purse, to help it keep its shape. My personal preference is a purse with some shape rather than a true slouchy hobo type bag.

22-Cheryl Neggers



I made the quilt in the hoop Peacock Paisley Bag. The stabilizer that I used was Pellon fusible.

The fabric that I used for the outside was black butter suede. The thread that I used were Rapos Polyesters with Madeira metallic throughout the design. I also quilted the back on my machine with clear thread, I used a gold magnetic snap. The inside was made of gold Dupioni silk and I had made six individual pockets.

www.BFC-Creations.com

Suz@BFC-Creations.com

14

©BFC-Creations.com and Susan Makalinaw

23-Terry Padda



I made this tote for my friend for her 50th birthday so she could use it on the cruise she is going on to celebrate. She was absolutely thrilled with the bag and shows it to everyone who visits her and also took it to show her family the last time she visited them.

I used curtain lining for the facing fabric to embroider on with a cotton batting and a plain white cotton backing for each section. On the back I inserted her initials in an oriental font to keep with the theme and used black bamboo handle. I used Floriani Stitch and Shape SSF to give stiffness the base and sides. Although you can't see it I used a black cotton fabric for the base, so that the dirt wouldn't show so much, and put on silver bag feet to match with the handle rings.

24-Teresa Miller



www.BFC-Creations.com

Suz@BFC-Creations.com

15

©BFC-Creations.com and Susan Makalinaw

Your designs are beautiful on the black as it shows the brilliant colors in the embroidery. The back of the purse is solid with an additional pocket w/button Velcro closure and cording for the top of the pocket. The front closure also has the button Velcro closure. Inside the purse are additional pockets to hold various objects to find quickly. I attached the lining to each side of the purse before sewing together. On the shoulder strap I used your designs to add colorful accents and quilted the backside of the strap with the lining material for contrast. I utilized all of your designs with the exception of the rosebuds on the back pocket. I hope that you enjoy the photos as much as I have enjoyed making your creation.

25-Cecilia Zoll



Made this one for my mother, last year for her birthday. She really loves it and so does her friends! Excellent job on the lattice work! Thank you for having such a great talent and sharing it! The first pocket picture has the font from Stitch Delight, Mother's Font. The 2nd picture of a pocket is from Sue4T designs, a filet crochet. I found a button that looks like the flowers on the purse and the lining.

www.BFC-Creations.com		Suz@BFC-Creations.com
		16
©BFC-Creations.com and Susan Makalinaw		



When Suz started making purses I knew that I would use them as inspirations for my wearable art outfits for our 2008 biannual quilt show fashion show last September. I first made the purses and then jackets or vests to match for the five outfits I wore. This medium size Summer Lace purse pattern was chosen for "Just Peachy in Summer Lace" The designs were done in Admelody rayon thread on Kona Cotton in light brown, turquoise, medium and dark peach colors. The stabilizer is OESD cut-a-way and the batting is warm and natural. Peach and turquoise rayon decorative machine stitching was used to quilt the strap and purse back. The Jacket is a McCall's "ten, twenty, thirty minutes to sew" Nancy Zieman pattern. I put designs from the purse on the sleeves and right collar edge. Since the brown and peach fabric on the jacket looked too plain I couched yarns on the front and used the same decorative stitching in a peach color on the back and sleeves of the jacket that I used on the purse back. A light tan rayon lining fabric was used to line the jacket, the purse's zipper pocket and 2 large side pockets. This combo piece has now been shown in 4 fashion shown in 3 states and is a wonderful spring and summer "Go to meeting" outfit.



I used the QIH bag BFC 849 and edited it to remove all the inner stitching and added designs from your Floral Combo II BFC419. I used some of the more Asian designs, that fitted with the oriental type scheme. I then stitched them out on dark red homespun. (The camera does not give the right shading) There are pockets in both bags and the lining of the outside bag is the same Japanese fabric that the inner one is made from.



It's your Brocade Bag stitched on black micro suede. It was a gift for my sister who loved it. Soon as I have time, I'm going to do one for myself!

www.BFC-Creations.com		Suz@BFC-Creations.com
		19
©BFC-Creations.com and Susan Makalinaw		



I had long wanted to do something with the Indigo 1 and 2 sets (BFC637 and 638) so I chose 11 designs from these sets plus a triangle from the Italian Tiles Borders and Corners (BFC754) stitched in one color. The embroidery was easy enough as there is only one color. I used adhesive tearaway stabilizer and Madeira thread.

The first time I saw a “pointed” bag was the sashiko bag by KennyKreations <http://www.kennykreations.com/sensational-sashiko> [kksensationalsashiko.htm](http://www.kennykreations.com/sensational-sashiko)

I found the same kind of pattern at Pointedly Patchwork (Pointedly A tote # 101, 2006) at <http://www.ericas.com/sewing/patterns/totes2.htm>

I also liked a bag published in the Australian magazine Machine Embroidery &Textile Art Volume 11 N°11 page 66. This bag is made of hexagons embroidered in the center but I thought squares hexagons were easier to work with. AND I could use my pattern to create a combination of these two bags!

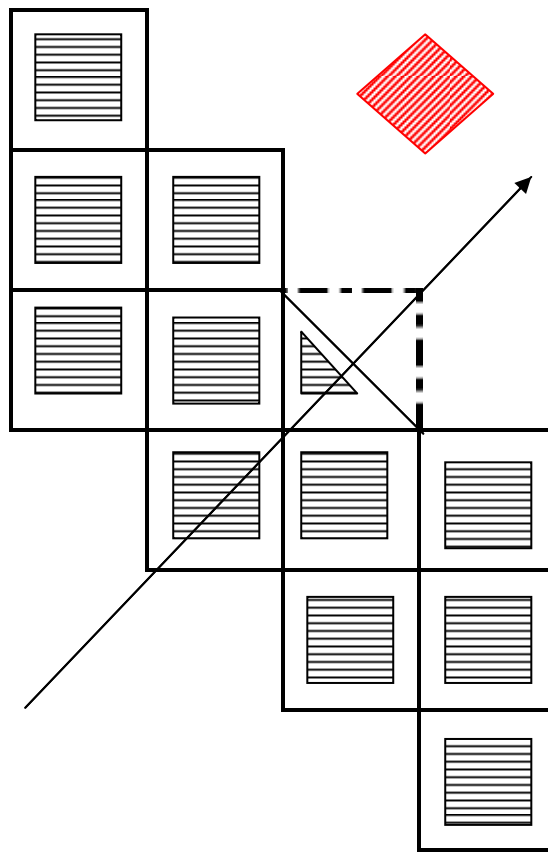
I didn’t use the pattern itself because I didn’t want to piece the blocks together, I wanted to have a one-piece background fabric to make my bag stronger. So I appliquéd my embroidered blocks on this background fabric with one of the decorative stitches of my machine.

I used some Timtex for the bottom as explained in the BFC716 Leopard bag instructions. I didn’t make any pockets because I have some fabric left and I am planning to make a matching organizer.

I had one problem with this bag though. I have the Indigo medium size sets so each square of the pattern is 17,5cm or 7 inches as shown on the picture. My embroidered blocks should have been cut on point (like the red example below). But that would have made a huge, huge bag. I had to choose between a too big and a tipsy-looking bag. So I decided to appliqué the blocks horizontally. This is why my bag has a tilted look. It would have been fine with the small size set.

www.BFC-Creations.com		Suz@BFC-Creations.com
		20
©BFC-Creations.com and Susan Makalinaw		

I've just found a pattern doing
Junction, Building Block Bags



exactly what I did: it's Indygo
IJ771

<http://www.indygojunctioninc.com/store/index.php?cPath=127&osCsid=nmtgjkua1qas8k441v7nve5v0>



I made this bag using your Paisley Peacock design, but used my own bag pattern for a tote rather than your horizontal bag design. It's made from Sylvia's beautiful copper brown silk, with gold leather trim and straps, all lined with brown satin.

The stabiliser is medium weight and the wadding front and back is lightweight iron on polyester batting. The embroidery threads are both polyesters and rayons, with one metallic thread in the peacock feathers.

The lining has been interfaced with Vilene lightweight interfacing.

The back pocket is inserted in the top seam and there are four different sized pockets in the lining. The bottom of the bag is made from brown leather.

The photos are the only thing I'd change - my daughter borrowed my camera so these photos are taken with a very low resolution mobile phone camera, on a cold, wet, windy late Autumn day.